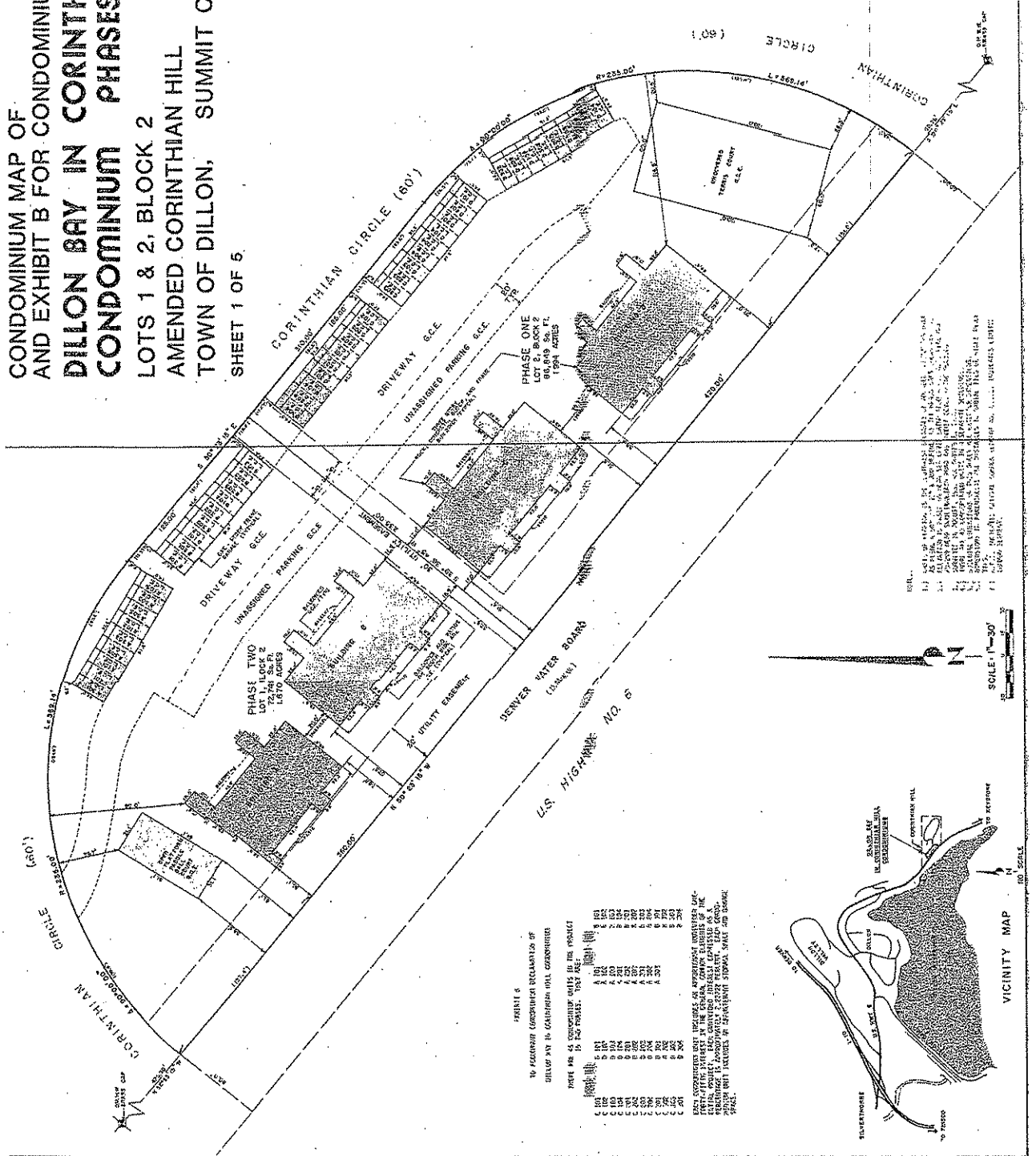


CONDOMINIUM MAP OF  
 AND EXHIBIT B FOR CONDOMINIUM DECLARATION OF  
**DILLON BAY IN CORINTHIAN HILL**  
**CONDOMINIUM PHASES ONE AND TWO**  
 LOTS 1 & 2, BLOCK 2  
 AMENDED CORINTHIAN HILL  
 TOWN OF DILLON, SUMMIT COUNTY, COLORADO  
 SHEET 1 OF 5



LEGAL DESCRIPTION

LOT 1, BLOCK 2, PHASE TWO, DILLON BAY IN CORINTHIAN HILL CONDOMINIUM PHASES ONE AND TWO, TOWN OF DILLON, SUMMIT COUNTY, COLORADO, ACCORDING TO THE SUBDIVISION MAP RECORDED IN BOOK 238 OF RECORDS, PLATS AND MAPS, AT PAGE 100, AND EXHIBIT B HERETO, AND AS THE SAME MAY BE AMENDED, ENLARGED, CORRECTED, EXTENDED, ALTERED, REVISED, REPEALED, SUPPLEMENTED, MODIFIED, OR OTHERWISE CHANGED BY ANY INSTRUMENT RECORDED IN ANY PUBLIC OFFICE HAVING JURISDICTION THEREOF.

DECLARATION

THE UNDERSIGNED, THE DEVELOPER, DO HEREBY CERTIFY THAT THE INFORMATION CONTAINED IN THIS DECLARATION IS TRUE AND CORRECT AND THAT THE DEVELOPER HAS COMPLIED WITH ALL APPLICABLE LAWS AND REGULATIONS IN CONNECTION WITH THE DEVELOPMENT OF THIS PROJECT.

SHEET 5

TO RECORDING JURISDICTION DECLARATION OF  
 DILLON BAY IN CORINTHIAN HILL CONDOMINIUM

PHASE TWO AS DESCRIBED ONLY IN THE RESPECT  
 TO THE DEVELOPER, THE

1.000	1.000
2.000	2.000
3.000	3.000
4.000	4.000
5.000	5.000
6.000	6.000
7.000	7.000
8.000	8.000
9.000	9.000
10.000	10.000
11.000	11.000
12.000	12.000
13.000	13.000
14.000	14.000
15.000	15.000
16.000	16.000
17.000	17.000
18.000	18.000
19.000	19.000
20.000	20.000

PHASE ONE AS DESCRIBED ONLY IN THE RESPECT TO THE DEVELOPER, THE  
 TO THE DEVELOPER, THE

SURVEYOR'S CERTIFICATE

I, the undersigned, a duly licensed and qualified surveyor, do hereby certify that the information contained in this declaration is true and correct and that I have personally examined the site and the records and that the same conform to the facts on the ground and to the records.

CLERK & RECORDER'S ACCEPTANCE

I, the undersigned, Clerk and Recorder of Summit County, Colorado, do hereby accept for record this declaration and the same conform to the laws of this state and to the rules and regulations of this office.

August 31, 1981  
 [Signature]

Robillard & Assoc.  
 Consulting Engineers, Inc.  
 Engineers, Draftsmen & Surveyors  
 P.O. Box 2117  
 Dillon, Colorado 80625